

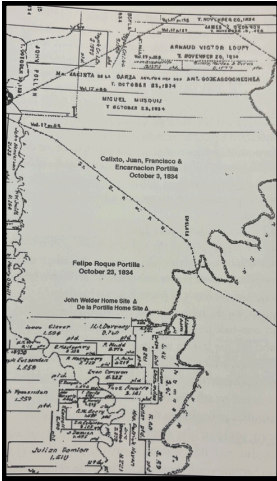
# WELDER NOW MONTHLY WELDER WILDLIFE UPDATES

VOLUME 1, ISSUE 5, MAY 2025

## WELDER FUN FACT >

### HISTORY

"This map shows the de la Portilla grants from the Power and Heweston Colony. The family holdings also included the league Francisco had bought from Jose Maria Castillo. John Welder paid members of the de la Portilla family thirty-five hundred dollars for their interest in the land." - Empresarios' Children  
Page 109



## VOLUNTEER OPPORTUNITIES >

### EDUCATION

- Mid Coast Master Naturalist (May 2 & 3)
- Gregory Portland ISD Field Day (May 6)
- Austin Waldorf School (May 7-8)
- Coliad ISD Field Day (May 9)
- Sinton ISD 3rd Grade (May 13-14)
- Kostoryz Elementary Science Spectacular (May 16)
- Youth Arthropod Day Camp (June 25)

### RESEARCH

- MAPS training and events begin in May.

## VOLUNTEER MAINTENANCE DAYS

- Wednesday, May 21, 2025
- Tuesday, June 24, 2025

### TOURS

- Volunteers are able to lead tours after completing tour training. Fill out an application today!



## PROJECTS >

### JUST COMPLETED

- Uno's New Enclosure

### IN PROGRESS

- Herb Garden Installation around the Education building



## OUR VOLUNTEERS >

We're incredibly grateful to our dedicated team of volunteers who have worked together to support our foundation by helping run workshops and classes. During our recent volunteer day, we cleaned up the soil pit, began organizing our collections in fumigation, and started setting up the herb garden. Looking ahead, our goal for the May workday is to complete the organizing and sorting of our collections that are currently in fumigation, and we're seeking more volunteers to help us finish strong. Thank you to everyone who contributed their time and effort—your support has made everything run smoothly and is deeply appreciated.

## THANK YOU TO OUR APRIL VOLUNTEERS

Kris Kirkwood  
Sally Scroggs

Ray Kirkwood  
Philip Woods

Greg Simmons  
Brittany Arredondo

## NUMBERS REACHED THIS MONTH >

### EVENTS ATTENDED/HOSTED IN APRIL



- Adult Wildflower Workshop (April 4)
- Gulf Coast Prairies Practitioner's Forum (April 10)
- Kostoryz Elementary Science Spectacular (April 11)
- Kleberg County Earth Day (April 11)
- Beth Hudson College Group (April 15)
- Driscoll Hospital Community Outreach Event (April 16)
- Sinton ISD Aquatic Class (April 24)
- Sinton ISD Aquatic Class (April 29 & 30th)



### TOTAL NUMBERS REACHED IN APRIL

- At Outreach Events
  - 299 people
- At the Foundation
  - 102 people



## UPCOMING PUBLIC EVENTS >

### MAY - JULY

- June 25th
  - Youth Arthropod Day Camp
- July 23rd
  - Youth Land Stewardship Day Camp



## EDUCATION EVENTS >

### A WORD FROM OUR EDUCATORS -

"What conservation education must build is an ethical underpinning for land economics and a universal curiosity to understand the mechanism. Conservation may then follow."

-Aldo Leopold



### MAY - JULY

- |   |   |
|---|---|
| <ul style="list-style-type: none"> <li>• May 1st &amp; 3rd               <ul style="list-style-type: none"> <li>◦ Mid Coast Master Naturalist</li> </ul> </li> <li>• May 3rd               <ul style="list-style-type: none"> <li>◦ Spring Fling - Lake Corpus Christi</li> </ul> </li> <li>• May 6th               <ul style="list-style-type: none"> <li>◦ GP ISD Field Day</li> </ul> </li> <li>• May 7-8th               <ul style="list-style-type: none"> <li>◦ Austin Waldorf School</li> </ul> </li> <li>• May 9th               <ul style="list-style-type: none"> <li>◦ Goliad ISD Field Day</li> </ul> </li> </ul> | <ul style="list-style-type: none"> <li>• May 13 - 14th               <ul style="list-style-type: none"> <li>◦ Sinton ISD - 3rd</li> </ul> </li> <li>• May 16th               <ul style="list-style-type: none"> <li>◦ Kostoryz Elementary Science Spectacular</li> </ul> </li> <li>• June 25th               <ul style="list-style-type: none"> <li>◦ Youth Day Camp - Arthropod</li> </ul> </li> <li>• July 23rd               <ul style="list-style-type: none"> <li>◦ Youth Day Camp - Land Stewardship</li> </ul> </li> </ul> |
|---|---|



## FELLOWS LENDING A HELPING HAND IN THE FIELD >

AMARIS & GRACE HELPING THE SINTON AQUATIC SAMPLING



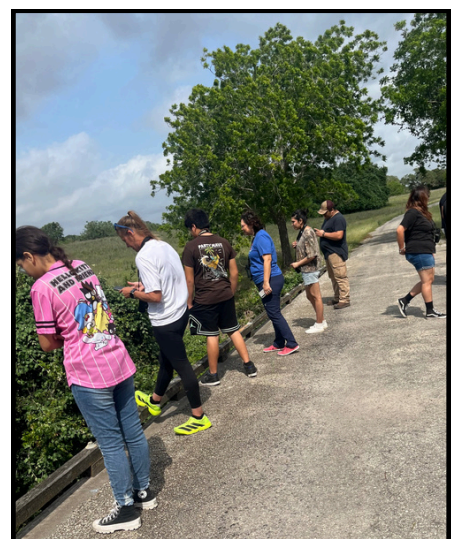
## ADULT WILDFLOWER WORKSHOP >



## SINTON HIGH SCHOOL AQUATIC CLASSES >



## STATE WILDLIFE JUDGING CONTEST >







## JOKE OF THE MONTH

Q: Why did the frog take the bus to work?

A: **His car got toad away.**

## COASTAL PRARIES RESTORATION PRACTIONERS FORUM >

LED BY TY HIGGINBOTHAM



## UNO'S BIG UPGRADE >



## RESEARCH : SPOTLIGHT ON A WELDER FELLOW >



ELLE A. SUTHERLAND, M.S.

### **Niche Plasticity of Desert Bighorn Sheep in the Trans-Pecos, Texas**

In Trans-Pecos, Texas, desert bighorn sheep (*Ovis canadensis*) were extirpated by the 1960s. However, restoration efforts have shown signs of success. Management of desert bighorn populations of the Trans-Pecos region is particularly complex as they co-occur with invasive aoudad (*Ammotragus lervia*), which not only carry and transmit diseases to desert bighorn but also occupy similar terrain.

Previous research has demonstrated that aoudad and desert bighorn niches overlap in optimal habitat. This is particularly relevant due to recent die-offs of desert bighorn populations in the Trans-Pecos following disease outbreaks. These die-offs raise concern about spatial overlap between species increasing risk of disease transmission. Additionally, spatial overlap indicates potential for competition, which could result in changing strategies as desert bighorn seek to avoid competition with aoudad. It is essential to understand how desert bighorn niches may shift in the face of competition, particularly as we seek to manage populations in a disease landscape. I am exploring variation in niche breadth and position among populations in the Trans-Pecos to determine whether desert bighorn exhibit niche plasticity. Specifically, I will use integrated step selection analyses to model inter-individual habitat selection behavior and assess the niche of populations. To accomplish this, I will utilize 21 population years of movement data from 7 desert bighorn populations. I will also use mortality data to investigate how niche partitioning strategies impact survival. By focusing on potential competition induced niche shifts, I intend to lay the groundwork for future targeted management actions for desert bighorn in landscapes co-occupied by aoudad.

Sul Ross State University

Major Advisory: Justin T. French, Ph.D.

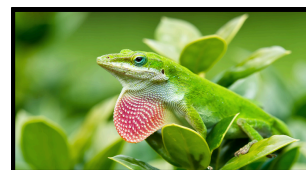
## UNO'S CORNER >

### GREEN ANOLE



The Green Anole is a primarily insect-eating lizard, known for its striking ability to change color in response to mood, environmental temperature, and humidity levels. Both male and female anoles possess a dewlap—a flap of skin beneath the throat that they can extend for communication

and display. In males, this dewlap is a vivid red, while in females it tends to appear a pale pink or white. Although not true gliders like flying lizards, Green Anoles can make short, controlled leaps from elevated spots, using flaps of skin near their legs to stabilize their descent.





## WELDER CALENDAR >



### OFFERED INSIDE

We are now featuring our NEW Rob and Bessie Welder Wildlife Foundation Calendar. All images inside were taken on the Refuge by Bill and Sharon Draker. Contact us at [aarredondo@welderwildlife.org](mailto:aarredondo@welderwildlife.org) to get ahold of our limited supply!

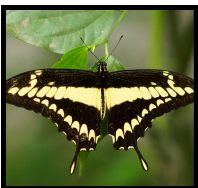


## RON'S INSECT FACT >



### GIANT SWALLOWTAIL BUTTERFLY

The Giant Swallowtail butterfly ranks among the largest butterfly species native to North America, with an impressive wingspan that typically ranges from 4 to 7 inches. Its caterpillar has developed a unique form of camouflage, closely resembling bird droppings—a clever disguise that helps it avoid detection by predators. In addition to this visual trick, the caterpillar can release a pungent odor as an extra line of defense. Adult butterflies show some distinct differences between the sexes: females tend to be slightly larger with more rounded wings, while males often display bolder, more vivid yellow markings on their wings. Despite their size and beauty, adult Giant Swallowtails have relatively short lifespans, usually living only 6 to 14 days.



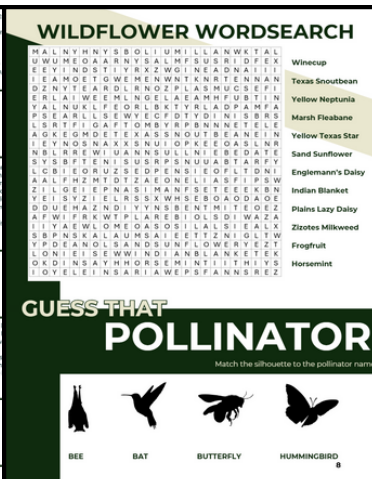
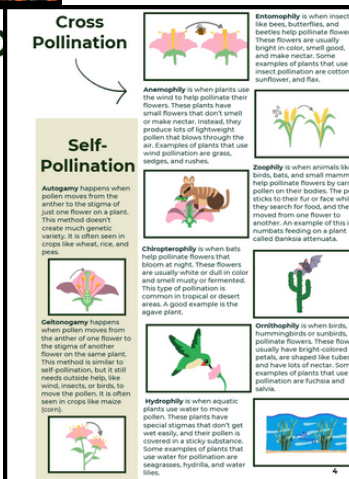
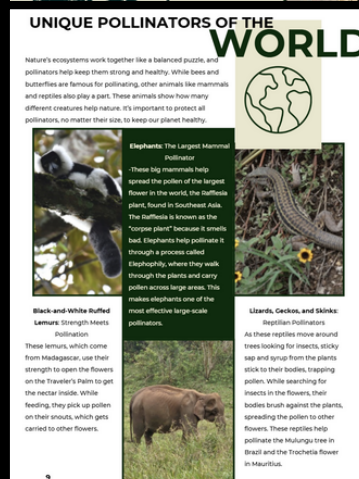
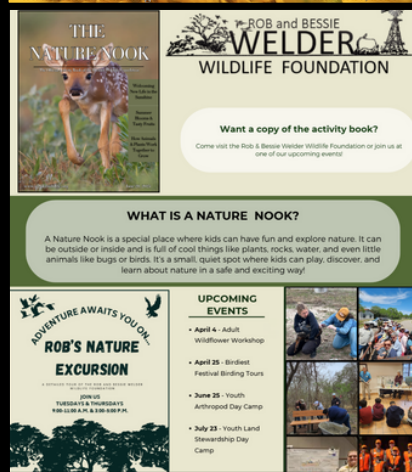
Welder Now | Volume 1, Issue 5

## LOOK AT OUR NEW ACTIVITY BOOK >



### THE NATURE NOOK

Get ready for something exciting! Join us as we unveil the very first issue of our brand-new activity book! This spring edition is all about the fascinating world of pollination and the incredible pollinators found in South Texas and beyond. Inside, you'll discover fun and engaging activities that make learning about nature a blast! Want to find out about our upcoming public events? Be sure to check out the back cover for all the details. This book is a must-have for South Texas kids to explore and learn about the amazing nature right in their own backyard! We will be passing these out at different events held at the refuge as well as outreach events!



## CONTACT INFORMATION >

- Office Phone: (361) 364-2643
- Email: [aarredondo@welderwildlife.org](mailto:aarredondo@welderwildlife.org)
- Website: [www.welderwildlife.org](http://www.welderwildlife.org)
- Physical Address: P.O. Box 1400 Sinton, TX 78387